

Section 1

PRODUCT INFORMATION DOCUMENT

WARRANTY

The intellectual property applied in the development of this product is the sole property of Middleton Food Products, and as such, this specification may not be disclosed to a third party without the prior written agreement from the Technical Department of Middleton Food Products.

This product conforms to existing UK/EU stator regulations and codes of practice. Where stated, Middleton Food Products will try to maintain suppliers and country of origins for the raw materials used in the formulations, however, we reserve the right to change suppliers and the source to meet the demands of quality, price and availability in order to maintain continuity of supply to our customers. This specification was correct at the time of publishing.

Product Information Documents are always available from Middleton Food Products upon request.

Should no feedback be provided to Middleton Food Products within 5 working days, customer acceptance of this PID will be assumed.

1. PRODUCT DESCRIPTION

1.1 **Product Code:** MF337 MF337T

1.2 **Erudus Code:** *(Where applicable)*

1.3 **Customer Code:** *(Where applicable)*

1.4 **Product Description:** Katsu Curry Glaze

1.5 **Colour/Appearance:** Yellow/brown textured powder

1.6 **Texture:** Powder

1.7 **Flavour:** Warm, aromatic, mild curry flavour with sweet fruity notes

1.8 **Product Attributes**

Acceptable Levels

Performance / Organoleptic

Acceptable
Control standard

2.0 Product Ingredients

2.1 The following gives the UK Ingredient declaration for inclusion in customers finished product "Ingredient Listing":

Ingredients: Sugar, Breadcrumbs (**WHEAT** Flour (**WHEAT**, Calcium, Iron, Niacin, Thiamin), Salt, Yeast), Dried Glucose Syrup, Salt, Curry Blend (Ground Coriander, Ground Turmeric, **MUSTARD** Flour, Chana Dal, Ground Cumin, Chilli Powder, Ground Fenugreek, Black Pepper, Garlic Powder, Salt), Modified Maize Starch, Onion Powder, Ground Ginger, Ground Turmeric, Yeast Extract, Tomato Powder, Ground Coriander, Natural Flavouring (Soy Sauce (Salt, Maltodextrin, **SOYA** Extract, **SOYA** Bean, **WHEAT** Flour, Glucose, **BARLEY** Malt Extract, Yeast Extract, Burnt Sugar, Spirit Vinegar), Chilli Powder, Ground **CELERY**, Thickener (Guar Gum), Ground Star Anise, Rapeseed Oil, Ground Black Pepper, Flavouring (**CELERY**), Ground Cinnamon.

Allergy Advice
 For Allergy Advice, including cereals containing Gluten, please see ingredients in 'bold' and UPPERCASE in the Ingredient Listing above.

 May Contain: Milk, Sulphites

3.0 NUTRITIONAL INFORMATION

Typical Values	Per 100g as sold
Energy kJ	1533
Energy Kcals	361
Fat (g)	2.6
Of which saturates (g)	0.3
Carbohydrate (g)	79
Of which sugar (g)	35.4
Protein (g)	5.8
Salt (g)	9.6

Approx 25 x 100g portions as sold per 2.5kg tub

Approx 100 x 100g portions as sold per 10kg tub

4.0 ALLERGEN INFORMATION

Used on Site	Used on Line	Present in Product		Recipe Contains (Yes/No)
Yes	Yes	Yes	Cereals containing Gluten (Wheat, Rye, Barley, Spelt, Oats, Kamut or their hybrid strains) and products thereof	Yes
Yes	Yes	Yes	Wheat and products thereof	Yes
No	No	No	Rye and products thereof	No
Yes	Yes	Yes	Barley and products thereof	Yes
No	No	No	Spelt and products thereof	No
Yes	No	No	Oats and products thereof	No
No	No	No	Kamut and products thereof	No
No	No	No	Crustaceans and products thereof	No
No	No	No	Molluscs and products thereof	No
Yes	No	No	Eggs and products thereof	No
No	No	No	Fish and products thereof	No
No	No	No	Peanuts and products thereof	No
Yes	Yes	Yes	Soybeans and products thereof	Yes
Yes	Yes	No	Milk and Milk products thereof (including Lactose)	No
No	No	No	Nuts (Almonds, Hazelnut, walnut, Cashew, Pecan Nut, Brazil Nut, Pistachio Nut, Macadamia Nut and Queensland Nut) and products thereof	No
Yes	Yes	Yes	Celery and products thereof	Yes
Yes	Yes	Yes	Mustard and products thereof	Yes
No	No	No	Sesame Seeds and products thereof	No
No	No	No	Lupin and products thereof	No
Yes	Yes	No	Sulphur Dioxide and Sulphites (E220-E228) at concentrates of more than 10 mg/kg or 10 mg/litre expressed as SO ₂	No

This product information has been compiled in accordance to EU Food Information for Consumers Regulation (EU FIC). No 1169/2011 Regulations (EC) No 1924 2006 and (EC) No 1925 / 2006

4.1 SUPPLEMENTARY DATA

	CONTAINS:
Animal products (other than those listed above) and products thereof	No
Maize and products thereof	Yes
Colours – non natural	No
Colours – natural	No
Flavours – non natural	Yes
Flavours – natural	Yes
GM Materials	No
	SUITABLE FOR:
Vegetarians	Yes
Vegans	Yes

5. STORAGE CONDITIONS AND SHELF LIFE

5.1 UNOPENED

Pack Code:	Pack Size:	Shelf Life:	
MF337	8 x 2.5kg	Total (sealed)	12 Months from Date of Manufacture. Clearly marked with "Best Before" date.
MF337T	10kg		
Storage Conditions: Store in a cool, dry place.			

5.2 OPENED

Shelf Life	1 month from the date of opening, re seal tightly
Storage Conditions:	Store in clean and dry conditions (<20 °C)

5.4 RECOMMENDED MAKE UP INSTRUCTIONS/USE

How to use Middleton Glaze:

For the best results add 100g of Middleton Glaze to 1kg of your chosen raw meat or poultry (or 10% of the weight of your meat).

1. Place the meat or poultry in a large bag or bowl.
2. Add the Glaze (see above for quantity guidance) into the bag. Tumble and shake until the meat is evenly coated.
3. Leave the coated product to develop into a tasty rich sauce.
4. Garnish and display, to be cooked as required.

6. FOOD SAFETY DATA

6.1 MICROBIOLOGICAL STANDARDS (TYPICAL)

Test	Standard
Salmonella	Not detected in 25g
Mould Target	<100 out of spec at >100000
Yeast Target	<100 out of spec at >100000
Staphylococcus Aureus	<100 out of spec at >1000
Bacillus Cereus	<100 out of a spec at >10000
Enterobacteriaceae	<100 out of a spec at >10000
Escherichia coli	Not Detected in 25g
Clostridium Perfringens	<100

7. EXPOSURE CONTROLS/PERSONAL PROTECTION

8.1 GENERAL PRECAUTIONS
Handle in accordance with good occupational hygiene and safety practices. Avoid contact with skin and eyes. Avoid contact with skin and eyes. Avoid unnecessary breathing in of dust. Reduce exposure to dust (see Section 7, Handling and storage).
Segregate dusty processes to prevent exposure of employees not involved in handling dusty ingredients. Change work practices to minimise the generation of airborne dust, for instance: <ul style="list-style-type: none"> • Improve care and attention to the prevention of spillages, especially around roll and pastry plants, sieves and mixers; • Avoid damage to packaging to prevent leaks. • Minimise the creation of airborne dust when folding/disposing of empty bags – eg: roll bag up from the bottom whilst tipping. • Minimise the use of compressed air lines for cleaning. When an air jet is unavoidable, a combined air jet/vacuum device should be used. • Use vacuum cleaners for general cleaning. When shovels have to be used for larger volumes respiratory protective equipment should be worn. Brushing should be eliminated.
8.2 VENTILATION
In accordance with LEV requirements as defined in COSHH 2002 (as amended) legislation.
8.3 RESPIRATORY PROTECTION
Respirators with a P3 filter.
8.4 EYE PROTECTION
Safety goggles as required.
8.5 SKIN PROTECTION
Standard protective clothing (including gloves) and appropriate skin protection if required.

8. PHYSICAL AND CHEMICAL PROPERTIES

9.1 FORM
Powder
9.2 COLOUR
Refer to section 1 of main document
9.3 ODOUR
Free from off odours, as previous standard
9.4 FLAMMABILITY
Product is combustible but does not constitute a particular fire hazard

9. STABILITY & REACTIVITY

This product is stable under normal conditions of use.		
10.1	Conditions to avoid	None
10.2	Materials to avoid	None
10.3	Hazardous decomposition products	None

10. TOXICOLOGICAL INFORMATION

11.1	Inhalation	Allergies of the respiratory system may occur. Repeated exposure may cause sensitisation. Irritation of the respiratory system may occur
11.2	Eye Irritation	Contact with eyes may cause irritation
11.3	Skin Irritation	Prolonged and/or frequent contact may cause irritation and dermatitis
11.4	Ingestion	May cause adverse reaction when ingested by people who are allergic to wheat based products

11. ECOLOGICAL INFORMATION

The product should be disposed of responsibly

12. DISPOSAL CONDITIONS

Product not believed to be dangerous to the environment and so no special disposal method is required. However, the method of disposal should be in accordance with current local authority regulations.

13. TRANSPORT INFORMATION

14.1	Road	<i>Third party haulier</i>
-------------	------	----------------------------

14. REGULATORY INFORMATION

Not classified as dangerous.

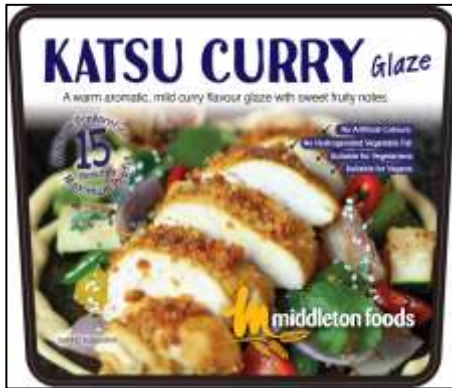
15. OTHER INFORMATION

Under the 2002 COSHH regulations (as amended) you are reminded that the user is under legal obligation to carry out a suitable and sufficient assessment as to the risks to health which this material may present under its actual conditions of use.

16. PRODUCT IMAGE/LABELLING

2.5kg Tub:

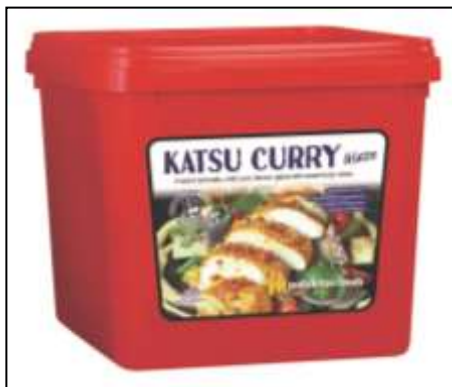
Front Label:



Back Label:



Pack Shot:



Box Label:

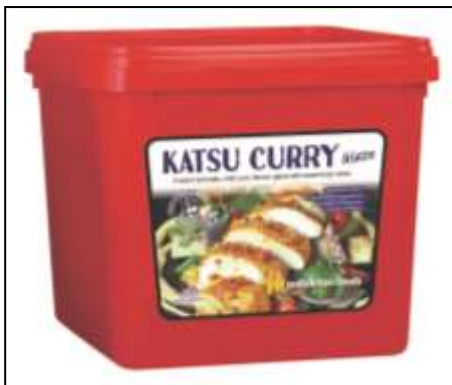


10kg Tub:

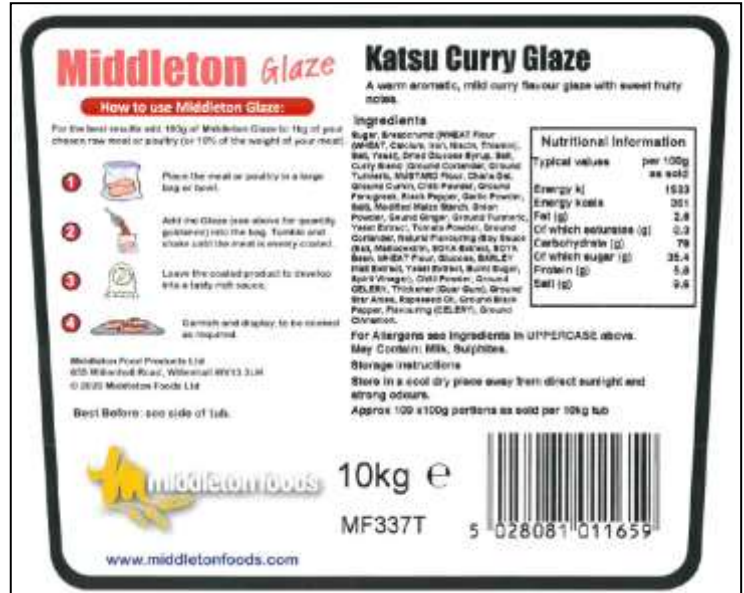
Front Label:



Pack Shot:



Back Label:



The information contained throughout the document was correct at the time of publishing

MSDS – Material Safety Data Sheet

Section 2

1. PRODUCT AND COMPANY IDENTIFICATION		
1.1	Product Name:	Katsu Curry Glaze
1.2	Product Code:	MF337 / MF337T
1.3	Description:	Katsu Curry Glaze
1.4	Manufacturers Name, Address & Tel No:	Middleton Food Products, 655 Willenhall Road, Willenhall, WV13 3LH 01902 608122

2. COMPOSITION/INFORMATION ON INGREDIENTS		
2.1	Contains:	See section 2 of main document

3. HAZARD IDENTIFICATION		
<p>Contains substances, which may cause contact sterilisation, allergic or irritant response. It may also cause irritation of the respiratory tract, eg: rhinitis. Prolonged skin contact may cause dermatitis and/or minor irritation. The product is combustible and when handling fine powered products there is a risk of dust explosions.</p>		

4. FIRST AID MEASURES		
4.1	Inhalation:	Remove from exposure and into the fresh air. If symptoms of irritation or sensitisation occur (shortness of breath, wheezing or laboured coughing) seek medical attention.
4.2	Ingestion:	Not applicable.
4.3	Skin Contact:	Wash off with soapy water. If skin irritation develops seek medical advice.
4.4	Eye Contact:	Rinse immediately with plenty of water. If irritation persists, seek medical advice.


5. FIRE/EXPLOSION HAZARD		
If concentrations of dust form, there is a risk of explosion. Under certain conditions dust clouds can ignite.		
5.1	Suitable fire extinguishing media:	Water, Foam, Dry Chemical, Carbon Dioxide
5.2	Protection against fire:	Good housekeeping to avoid the accumulation of dust. High concentrations of dust are potentially explosive. Avoid ignition sources.

6. ACCIDENTAL RELEASE MEASURES		
6.1	Methods of cleaning/absorption:	Clean up by dustless means, for instance, by a vacuum equipped with a high efficiency filter. Avoid brushing, sweeping or air hoses. Dilute remainder with plenty of water. Never use a high pressure water jet.
6.2	Personal precautions:	See section 8. Exposure controls/personal protection
6.3	Environmental precautions:	The method of disposal should be in accordance with current local authority regulations.

7. HANDLING AND STORAGE		
7.1	Handling:	Avoid dust formation and keep the working area free from accumulated dust and ignition sources. Use engineering controls to minimise dust emission. Local Exhaust Ventilation (LEV) or enclosure of processes should be used where possible.
7.2	Storage:	Store in original packaging. Keep cool and dry and ensure product is stored in accordance with Food Safety Act.

8. PACKAGING		
Packaging Pack Size:	8 x 2.5kg / 10kg	
PRIMARY PACKAGING: 2.5kg Tub		
P410 Blue Food Grade (High Tensile poly Bag)		Weights: <i>Liner: 5.8g</i> <i>Tub: 144g</i>
P970 / P971 4.0L Rigid plastic polypropylene food grade container with lid.		
SECONDARY PACKAGING: 2.5kg Tub		
8 x 2.5kg Cardboard Box P202		Weights: 759g
Sealing:	Tamper Evident	
Dimensions of Unit: <i>(Length x Width x Height)</i>	PRIMARY PACKAGING: Liner: 375mm x 500mm Tub: 176.6mm square x 173.8mm high	SECONDARY PACKAGING: 385mm (L) X 385mm (W) X 368mm (H)

PRIMARY PACKAGING: 10kg Tub		
P411 Blue Food Grade (High Tensile poly Bag)		Weights: <i>Liner: 41.5g</i> <i>Tub: 554g</i>
P408S 17L Rigid plastic square polypropylene food grade container with lid.		
SECONDARY PACKAGING: 10kg Tub		
N/a		Weights: N/a
Sealing:	Tamper Evident	
Dimensions of Unit: <i>(Length x Width x Height)</i>	PRIMARY PACKAGING: Liner: 558mmx660mm (250 microns) Tub: 291mm top x 295mm high	SECONDARY PACKAGING: N/a

Pallet Configuration:				
2.5kg Tub				
	Units per outer case:	8 x 2.5kg	Layers per pallet:	4
	Cases/sacks per layer:	6	Total cases/sacks per pallet:	24
10kg Tub				
	Units per outer case:	1 x 10kg	Layers per pallet:	5
	Cases/sacks per layer:	16	Total cases/sacks per pallet:	80
Labelling	Each sack is labelled with Product Name, Product Code, Product Weight (minimum Weight), Best Before Date (DD/MM/YY) and 5 digit Julian Code <i>(please see below)</i>			
	Explanation of Julian Batch Coding: BEST BEFORE: 20 DEC 2013 DAY CODE 12355 BATCH CODE 1 PACKING LINE B Day Code '12' Indicates the Year of Manufacture E.g. 2012 '355' Indicates the day of the year E.g. 20 December Batch Code '1' E.g. The first batch of product produced that day on Packing Line 'B'			
Barcoding:	<u>INNER BARCODE:</u>		<u>OUTER BARCODE:</u>	
8 x 2.5kg Case	5028081011666		5028081011673	
10kg Tub	5028081011659		N/a	



PRODUCT NAME: Katsu Curry Glaze

Finished Product Code: MF337 / MF337T

R & D Project Code: G02227-2

Pack Size: 8 x 2.5kg / 10kg

Date: August 2020

Version: 3

For any products containing Palm Oil; please see despatch notes/invoices for RSPO Palm Oil Sustainability status.

In accordance with Regulation (EU) No 1169/2011 Annex II; wheat based glucose syrups, including Dextrose, are exempt from allergen labelling. Our Supplier has confirmed <20mg/kg of Gluten in the materials. We do not however, conduct internal Gluten testing of our products.

CONTROLLED COPY



PRODUCT NAME: Katsu Curry Glaze

Finished Product Code: MF337 / MF337T

R & D Project Code: G02227-2

Pack Size: 8 x 2.5kg / 10kg

Date: August 2020

Version: 3

Specification Version Number	Date	Reason for Amend	Amended by (for Admin)	Authorised by (for Technical)
1.0	08.04.2020	New Specification	AB	AW
2.0	11.06.2020	Usage instructions added to labels Tub label size changed to 4 x 4 (2.5kg)	AB	MAB
3.0	13.08.2020	Change from black & white labels to glossy labels Barcodes added	AB	AH

No changes to be made to this specification or the product without prior notification to Middleton Food Products Ltd

Please sign and return the slip below by way of your approval of this specification, otherwise Middleton Food Products Ltd will assume this specification suits your requirements of both legality and quality.

NAME: MAGGIE GIBBS

POSITION: Technical Manager

SIGNATURE: 

DATE: 18 August 2020

COMPANY:

ADDRESS:

NAME:

POSITION:

SIGNATURE:

DATE: